

# BEWARE OF IMITATIONS

## **Difference in measurement of the Release Bearing.**

### **Height of the fork lever insert on the release bearing.**

EXEDY release bearing has a required height of 13mm. The inferior copy is 1mm longer which will affect the preload and stroke (results in poor clutch engagement and disengagement). It might also interfere with the transmission housing.

## **Difference in Performance.**

### **Variation in Pressure Plate Lift:**

Imitation does not meet the standard requirement (within 0.2mm maximum). This might cause a mechanical judder.

### **Lever Height:**

Neither of the inferior copies meet the standard requirements of the initial lever height.

Compared to EXEDY, the imitation are 2~3mm taller in height. This might cause a lever to malfunction at the initial release and also cause a poor engagement and disengagement.

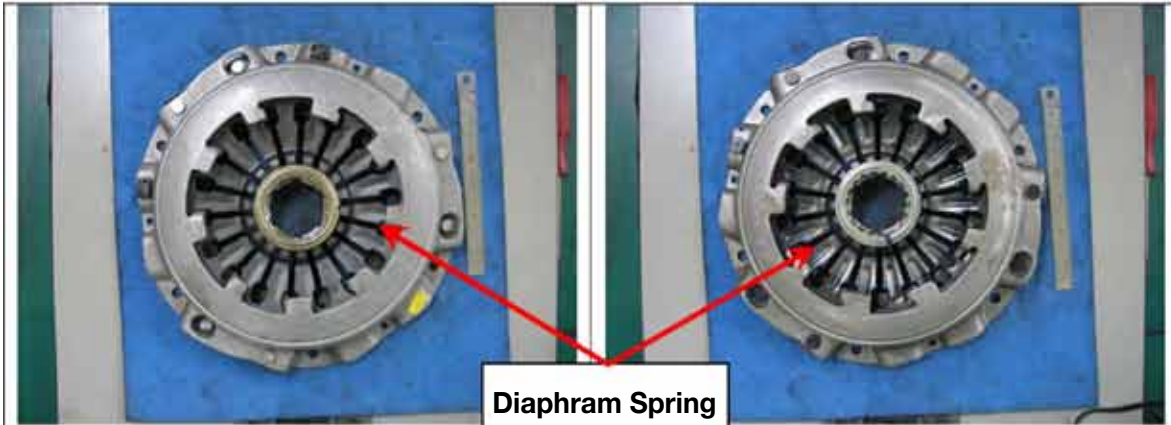


**EXEDY Globalparts Corporation**

# APPEARANCE COMPARISON

Imitation

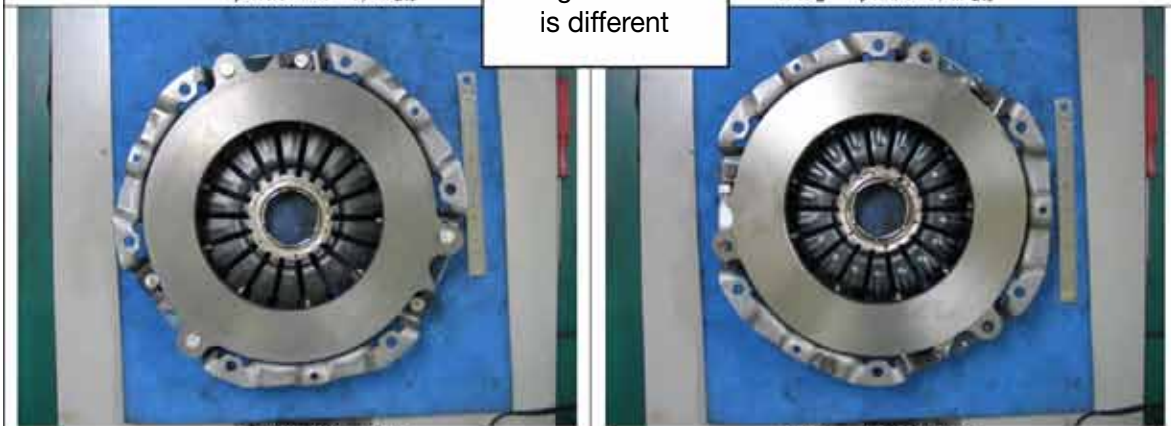
EXEDY



IMITATION φ230 DSP T/M側

EXD J φ230 T/M側

**Diaphragm Spring**  
Design of the rib  
is different



IMITATION φ230 DSP PP側

EXD J φ230 PP側



IMITATION φ230 STR部 T/M側 1

EXD J φ230 STR部 T/M側 1

Color of the rivets  
is different.  
Imitation has a  
washer.



IMITATION φ230 STR部 T/M側 2

EXD J φ230 STR部 T/M側 2

# APPEARANCE COMPARISON

Imitation

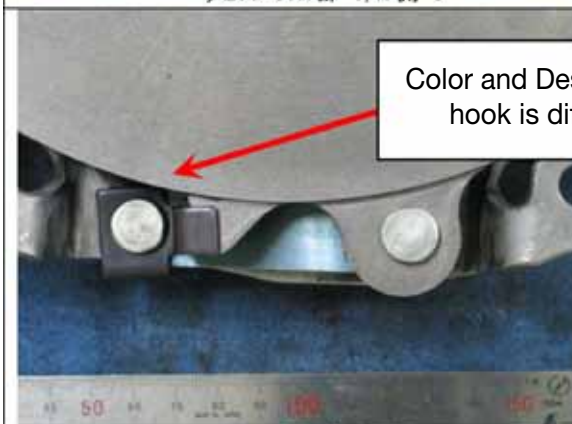
EXEDY



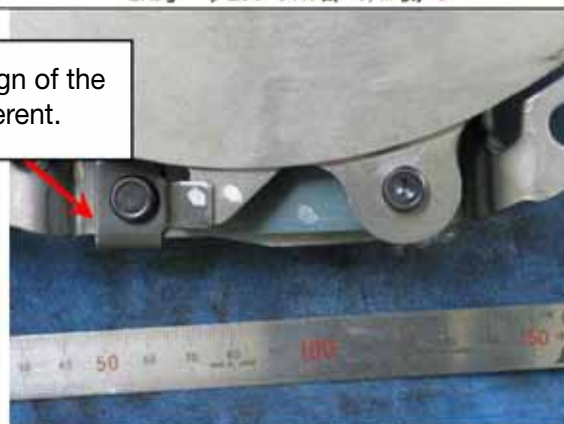
IMITATION φ230 STR 部 T/M 側 3



EXD<sub>J</sub> φ230 STR 部 T/M 側 3



IMITATION φ230 STR 部 PP 側 1



EXD<sub>J</sub> φ230 STR 部 PP 側 1

Color and Design of the hook is different.



IMITATION φ230 STR 部 PP 側 2



EXD<sub>J</sub> φ230 STR 部 PP 側 2



IMITATION φ230 STR 部 PP 側 3



EXD<sub>J</sub> φ230 STR 部 PP 側 3

# APPEARANCE COMPARISON

Imitation

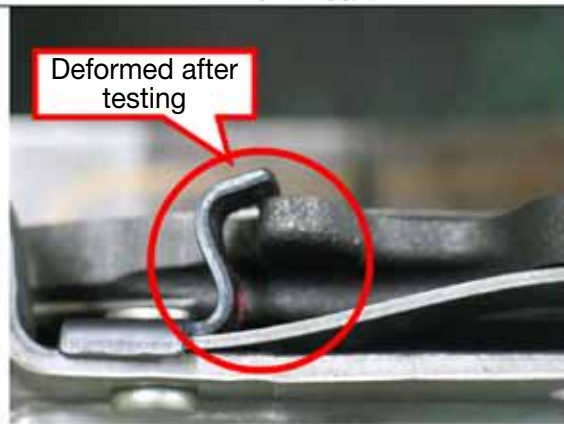
EXEDY



IMITATION φ230 側面



EXD φ230 側面



IMITATION φ230 HOOK After Testing

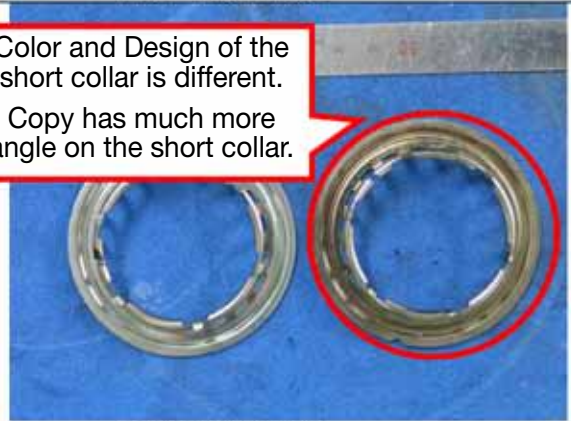


EXD φ230 HOOK After Testing



φ230 用 W/C EXD IMITATION

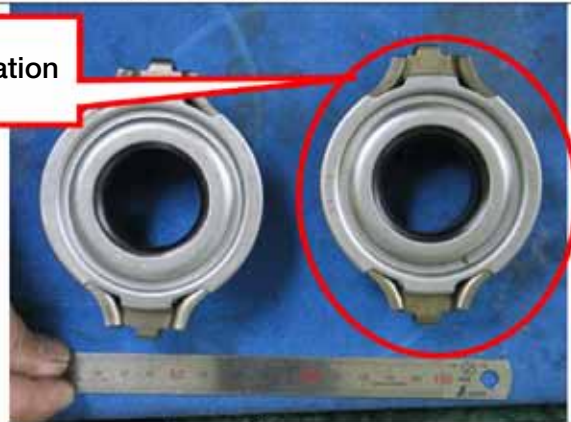
Color and Design of the short collar is different.  
Copy has much more angle on the short collar.



φ230 用 W/C EXD IMITATION



φ230 用 W/C EXD IMITATION

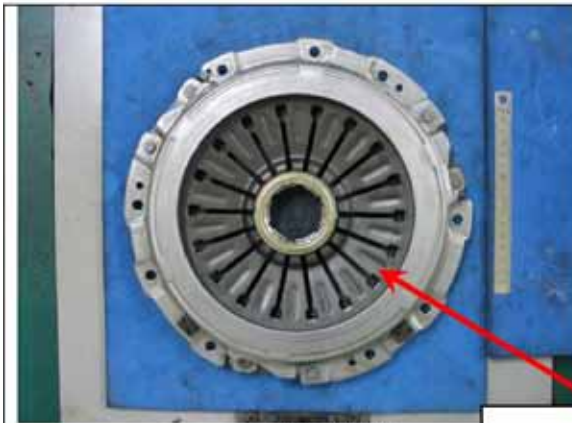


Brg EXD IMITATION

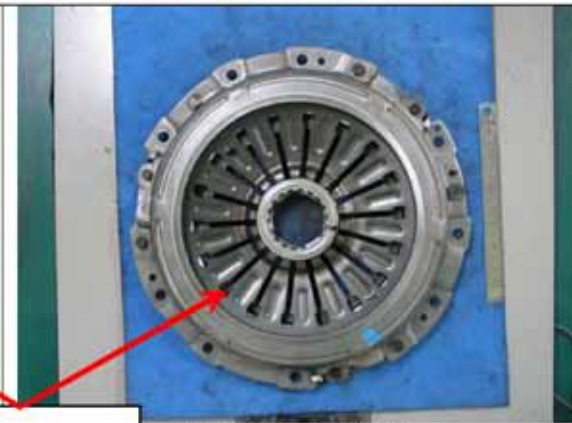
# APPEARANCE COMPARISON

Imitation

EXEDY



IMITATION  $\phi$  240 T/M 側

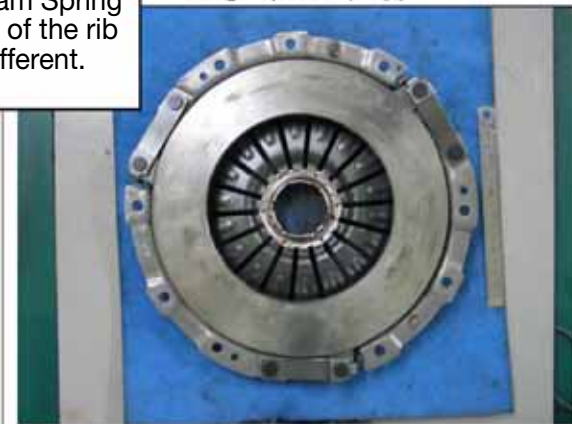


EXD<sub>J</sub>  $\phi$  240 T/M 側

Diaphragm Spring design of the rib is different.



IMITATION  $\phi$  240 PP 側



EXD<sub>J</sub>  $\phi$  240 PP 側



IMITATION  $\phi$  240 HOOK 1



EXD<sub>J</sub>  $\phi$  240 HOOK 1



IMITATION  $\phi$  240 HOOK 2

Due to its inferior design, the hook is very easy to break off.

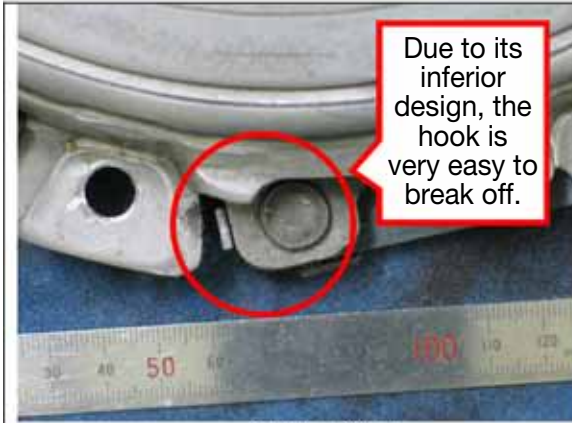


EXD<sub>J</sub>  $\phi$  240 HOOK 2

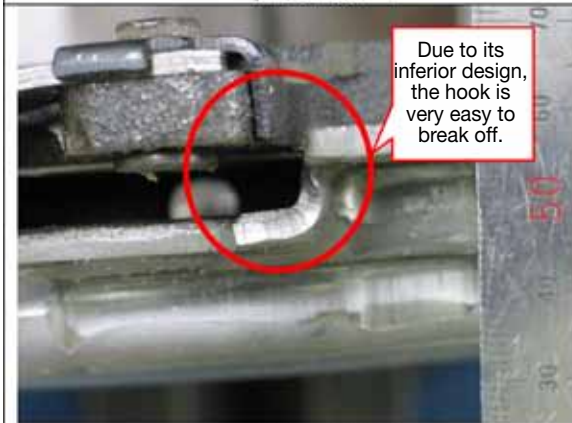
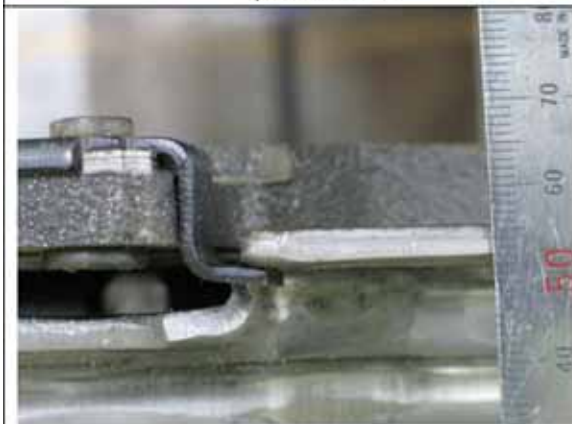
# APPEARANCE COMPARISON

## Imitation

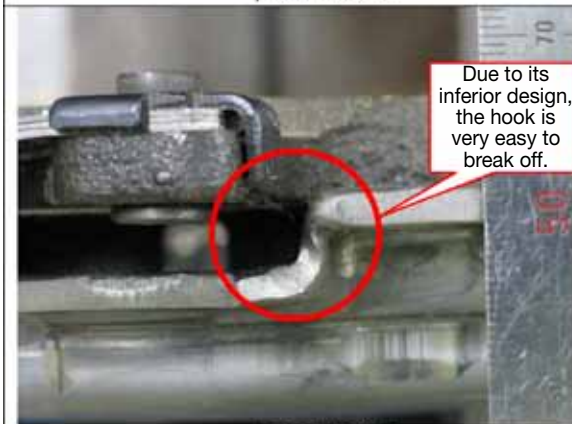
## EXEDY



IMITATION φ 240 HOOK 3



IMITATION φ 240 HOOK 2



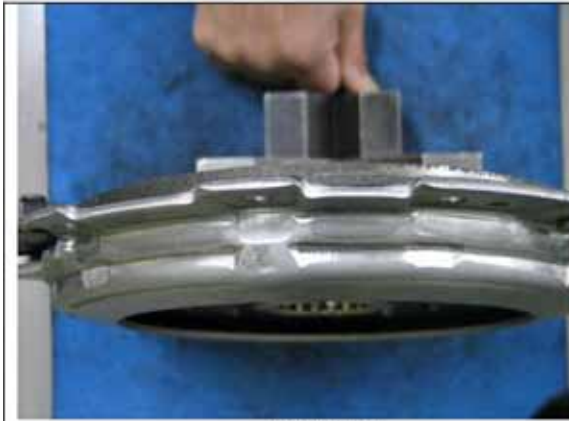
IMITATION φ 240 HOOK 3



# APPEARANCE COMPARISON

Imitation

EXEDY



IMITATION φ240 側面



EXD<sub>J</sub> φ240 側面



φ240 用 W/C EXD<sub>J</sub> IMITATION

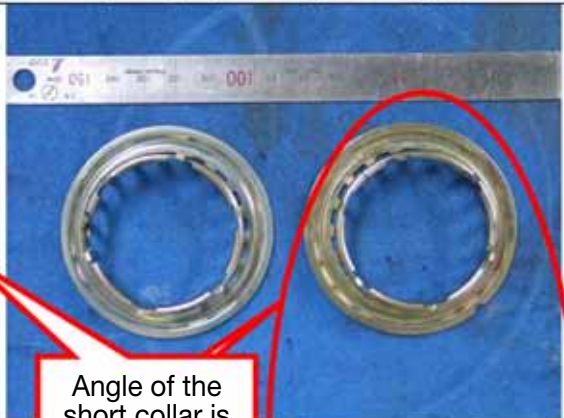


Imitation has a wave spring.

φ240 用 W/C EXD<sub>J</sub> IMITATION 側面



φ240 用 W/C EXD<sub>J</sub> IMITATION



EXD<sub>J</sub> IMITATION

Angle of the short collar is bigger.

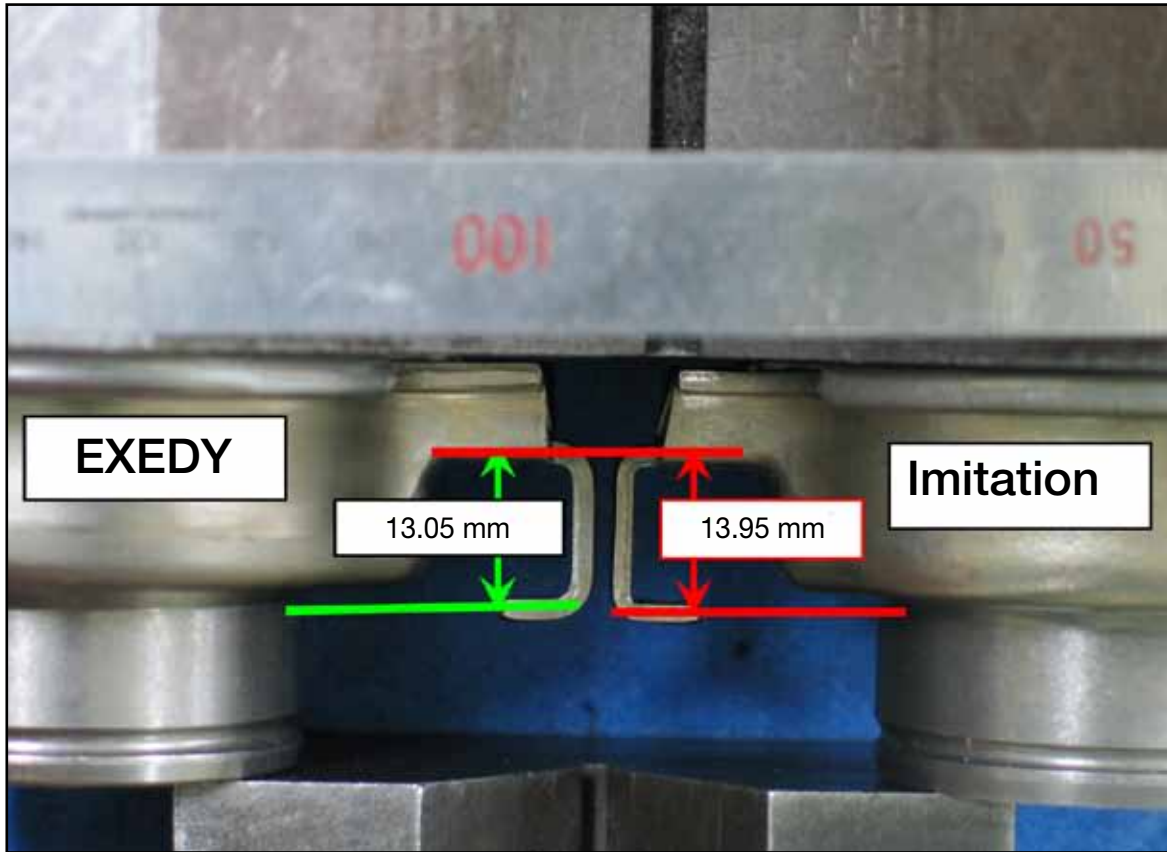


Brg EXD<sub>J</sub> IMITATION T/M 側



Brg EXD<sub>J</sub> IMITATION CC 側

# APPEARANCE COMPARISON



Bearing side

Appearance difference between EXEDY and Imitation